

Kubota Keyless Start
Application Software for PC
USER GUIDE

CONTENT	Page
Definitions _____	3
System Requirements _____	3
Downloading Software _____	3
Language Selection _____	4
Application Login _____	4
Log Menu _____	6
User Menu _____	7
Configuration of KSK Device Settings _____	11
Menu Bar _____	17

Definitions:

KSK: Keyless Start Keypad

Sleep Mode: The low power mode the KSK device will go into when the Stop button is pressed enough times that the display screen goes blank.

SSID: The Service Set Identifier or Wi-Fi network name.

User Code: 4-10 digit code button press on the KSK device that allows user to start/stop the machine. The default User Code is 1111.

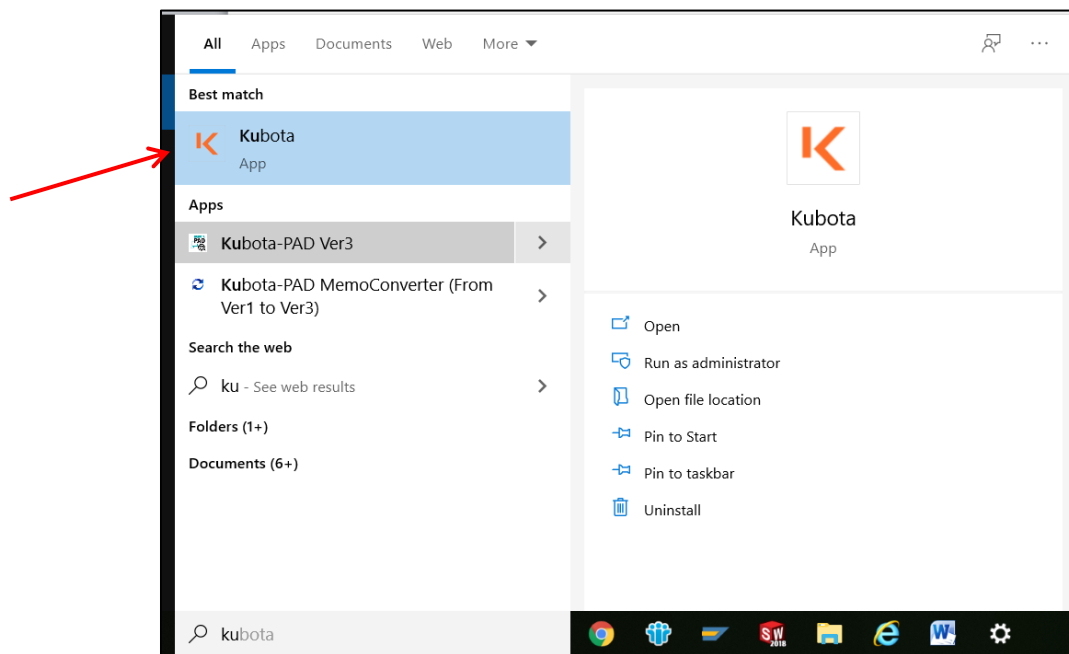
Owner Code: 4-10 digit code button press that allows owner to start/stop the machine and configure all settings on the KSK device. The owner code also acts as sign in code for computer application software. The default Owner Code is 13579.

System Requirements:

-Windows 10 operating system

Downloading Software:

Visit kubotausa.com, and click on the 'Service and Support' tab. Select and download the 'setup.exe' file. When prompted click 'Install'. After setup.exe file completes installation the software will open by default. The software can be found on your PC under the name 'Kubota'.



Language Selector:

In the computer Kubota Application start up Main menu screen the upper right-hand corner displays a language selector drop down menu. The application software currently supports English (default), Spanish and French.



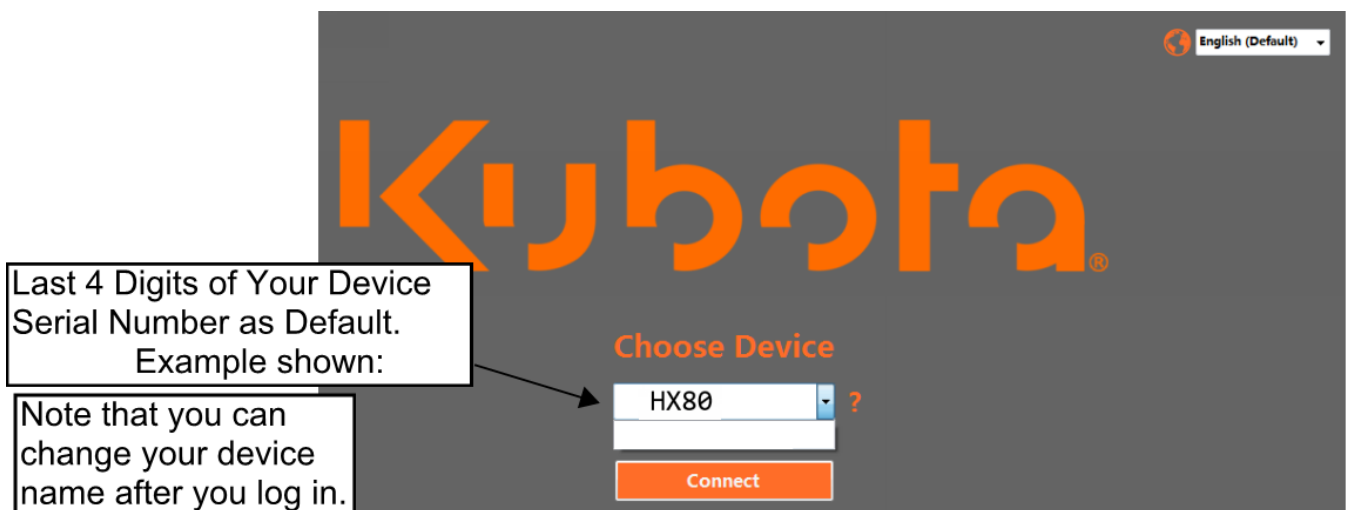
Application Login:

This dropdown allows you to connect to a specific KSK device. KSK device must be connected to vehicle or machine battery for power. KSK device must not be currently in use or logged into.

Select the KSK device name from the drop down menu and click, “Connect”.

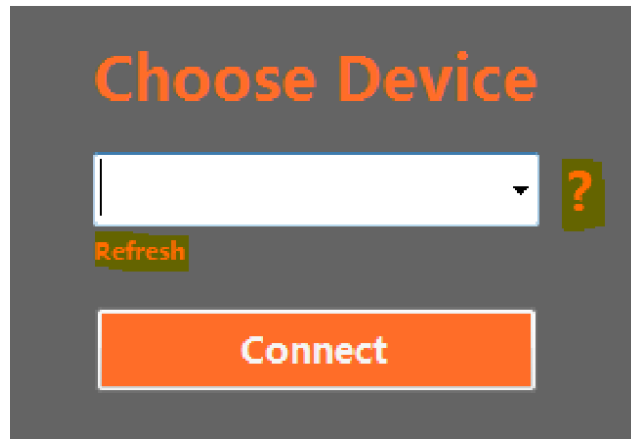
The KSK device name is the last 4 digits or characters of the KSK device serial number for that specific KSK device. If you do not know the keypad’s serial number, log into the keypad using code ‘999’ to see the device’s serial number.

This name can also be changed in the SSID name on the device, or in the KSK Application. This is a good way to name the device based on the machine if desired.



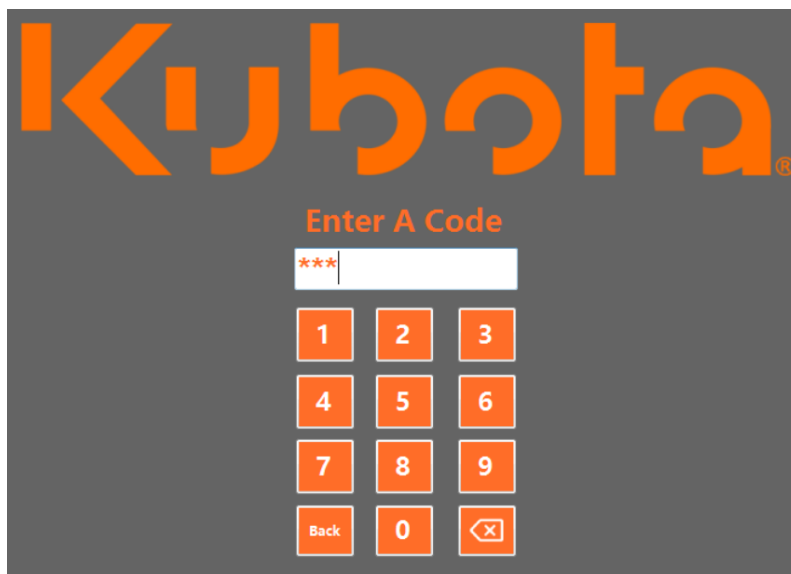
Refresh/ Tool tip:

If your KSK device name is not showing up in the connector dropdown menu, try clicking the “Refresh” button. If the problem persists, try restarting the device and click the “Refresh” button again. On the right-side of the dropdown you will see a tool tip icon “?”



Enter Code Screen:

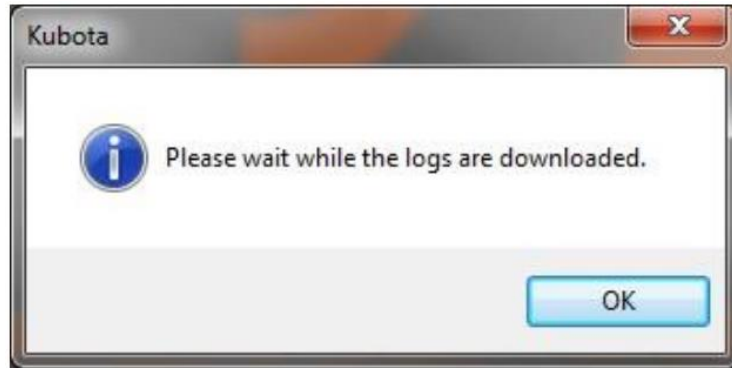
Use your KSK device **Owner Code** to log into the application. The factory default owner code is '13579'. **NOTE:** This default code should be changed as soon as possible for security reasons. Use the “Back” button will return you to the Device Selection Screen. “Choose Device”. The “Backspace” button is marked with an arrow icon. This will clear the code field in case an incorrect number was entered.



Enter your Owner Code Number for the KSK device.

Log Menu:

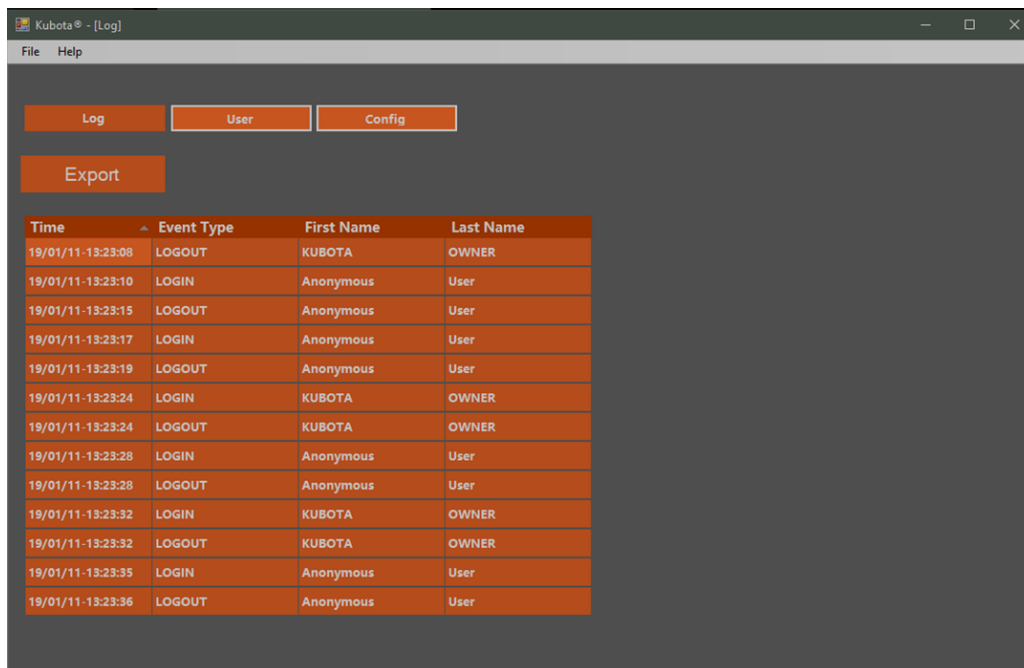
After entering your Owner Code to log into the application, the software will upload all user logs from the device. This may take several seconds.



The "Log" screen displays a list of the KSK device logs both 'log in' and 'log out' events on the KSK keypad. Every time a user or the owner logs in or out of the KSK device the User's code, name, the date, and time are recorded and logged. These are displayed on the PC application as individual lines.

The maximum number of logs that can be saved on the KSK device is 1947 log events. Once the maximum number of logs have been reached the KSK device memory will then overwrite a new log event starting back at the oldest log number.

Main Menu in KSK Application Software:

A screenshot of the Kubota application's main menu. The window title is "Kubota® - [Log]". The menu includes buttons for "Log", "User", "Config", and "Export". Below these buttons is a table displaying a list of log events with columns for Time, Event Type, First Name, and Last Name.

Time	Event Type	First Name	Last Name
19/01/11-13:23:08	LOGOUT	KUBOTA	OWNER
19/01/11-13:23:10	LOGIN	Anonymous	User
19/01/11-13:23:15	LOGOUT	Anonymous	User
19/01/11-13:23:17	LOGIN	Anonymous	User
19/01/11-13:23:19	LOGOUT	Anonymous	User
19/01/11-13:23:24	LOGIN	KUBOTA	OWNER
19/01/11-13:23:24	LOGOUT	KUBOTA	OWNER
19/01/11-13:23:28	LOGIN	Anonymous	User
19/01/11-13:23:28	LOGOUT	Anonymous	User
19/01/11-13:23:32	LOGIN	KUBOTA	OWNER
19/01/11-13:23:32	LOGOUT	KUBOTA	OWNER
19/01/11-13:23:35	LOGIN	Anonymous	User
19/01/11-13:23:36	LOGOUT	Anonymous	User

Log screen/ Main screen of Application Software.

Export Button:

The “Export: button will send all logs to local CSV file (comma separated values file) for archiving onto your PC. You will see a dialog for choosing a location to save the files on your PC. You may want to create a location on your PC to archive all the logs that you export.

	A	B	C	D
1	19/01/11-13:23:08	LOGOUT	KUBOTA	OWNER
2	19/01/11-13:23:10	LOGIN	Anonymous	User
3	19/01/11-13:23:15	LOGOUT	Anonymous	User
4	19/01/11-13:23:17	LOGIN	Anonymous	User
5	19/01/11-13:23:19	LOGOUT	Anonymous	User
6	19/01/11-13:23:24	LOGIN	KUBOTA	OWNER
7	19/01/11-13:23:24	LOGOUT	KUBOTA	OWNER
8	19/01/11-13:23:28	LOGIN	Anonymous	User
9	19/01/11-13:23:28	LOGOUT	Anonymous	User
10	19/01/11-13:23:32	LOGIN	KUBOTA	OWNER
11	19/01/11-13:23:32	LOGOUT	KUBOTA	OWNER
12	19/01/11-13:23:35	LOGIN	Anonymous	User
13	19/01/11-13:23:36	LOGOUT	Anonymous	User

CSV file with logs downloaded from KSK device.
(In Microsoft Excel)

User Menu:

Data Grid Table / View:

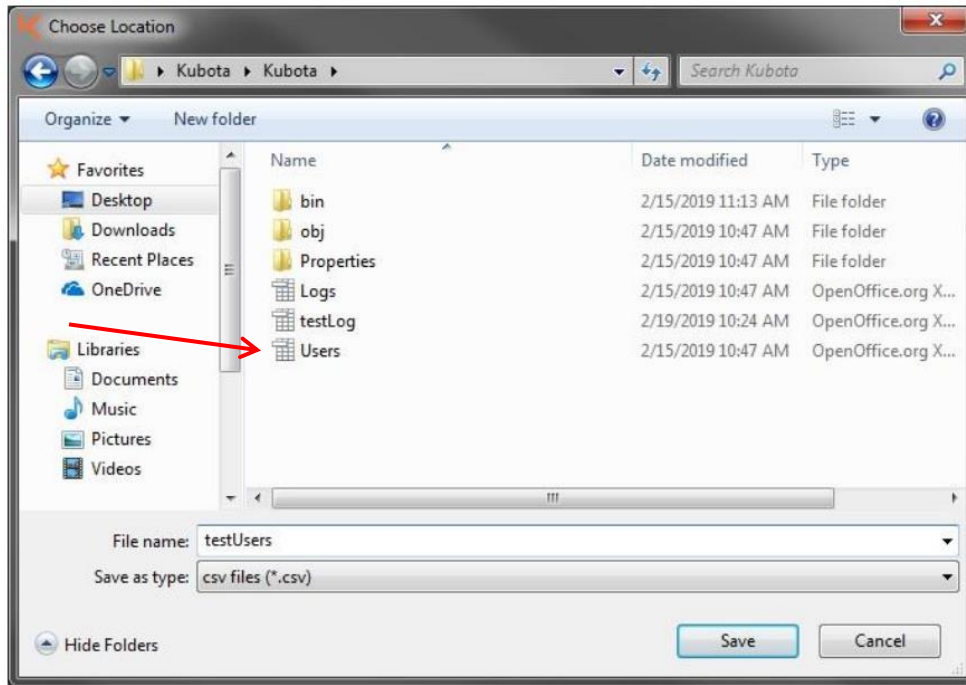
Displays a list of all registered users including their first name, last name, asterisk for user code and “Delete User” button that is represented by the table you see below.

Log	User	Config	
Import	Export	Add User	Update Keypad
First Name	Last Name	Code	
John	Smith	****	Delete User
Jane	Doe	****	Delete User
Bob	Johnson	****	Delete User

User code table

Export:

The “Export” button will send all user data from the table view that is data on your KSK device to a local CSV file on your PC for archiving. Click Save in the open dialog window and the file in CSV format will save to the location on your PC that you choose.

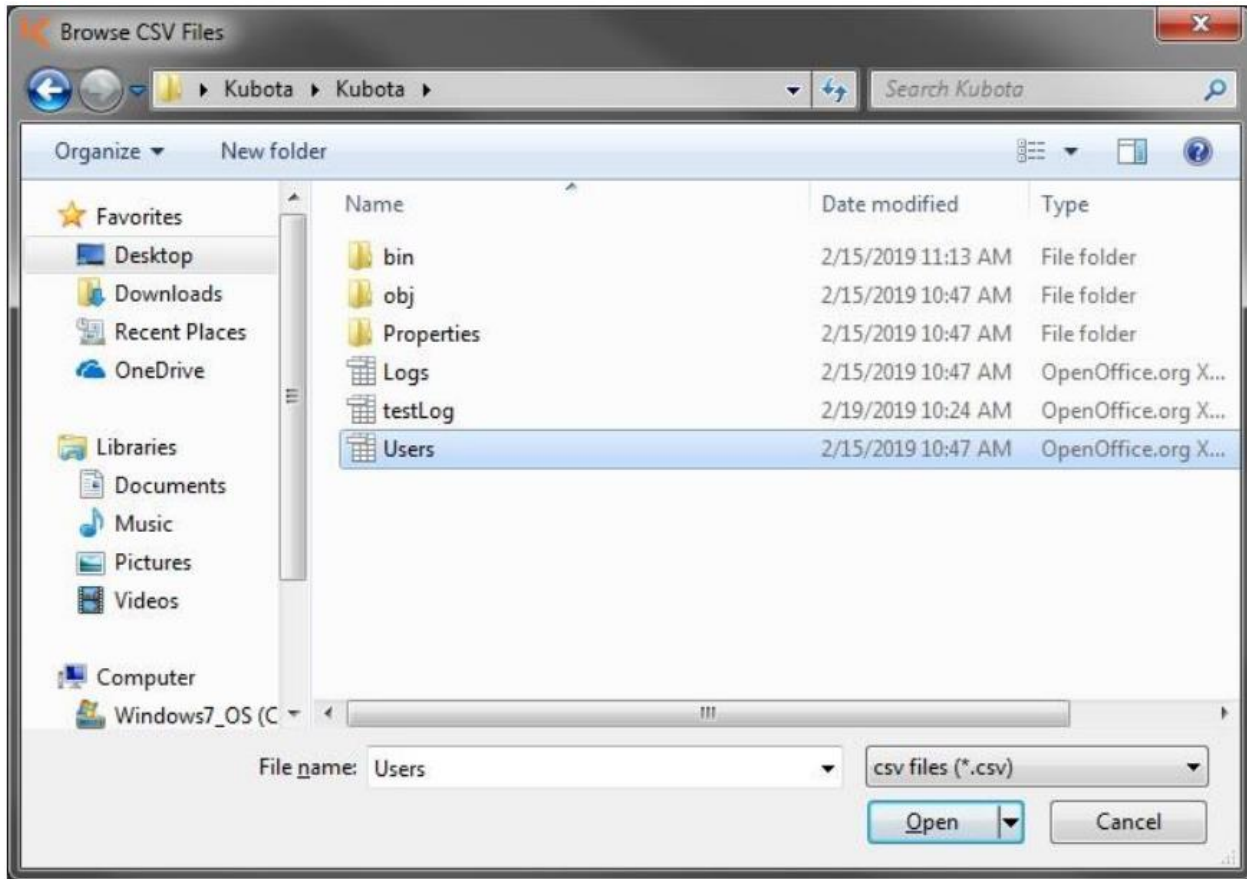


Saved .csv user file

After saving the user file you can then make edits to the user’s names and codes directly in the .csv file. **Note:** Be sure to use the same format in the .csv file. Do not add any extra rows or columns. After making edits the file can then be Imported back into the KSK Application.

Import Button:

The “Import” button will download the list of users registered to access the device. Population or refresh of the data grid occurs on the initial loading of the “User” tab button. When you click the “Import” button a dialog window will open. Use file explorer to select the appropriate .csv file to import. You must use the correct format to Import User files into the KSK device for populating the data grid table.



Dialog window to open / Import files to your KSK device.

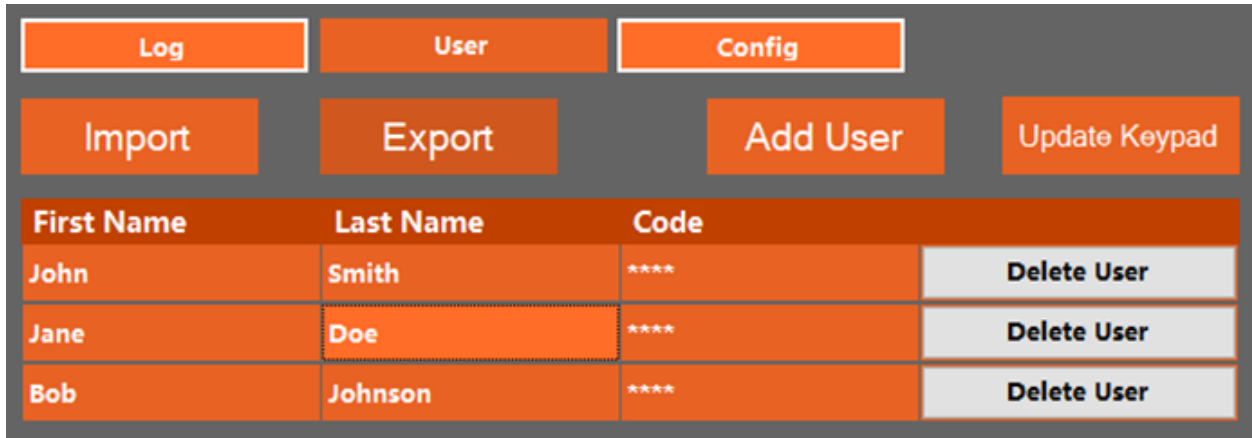
NOTE: You cannot send or Import duplicate user codes to the KSK device or the update will fail. When creating users in the table view, ensure that there are no conflicts in the columns. No duplicate user names or codes. Keep in mind that because the KSK Keypad buttons share digits there are certain codes that cannot be used at the same time, i.e. 1111 and 2222.

Add User:

“Add User” button will add a new row to the data grid so that you can add a new user by First name, Last name and User code. NOTE: All columns are required to successfully upload data to the KSK device.

After Clicking “Add User” fill in the needed information First Nam, Last Name and Code.

Example: John Smith code 5551234567 (Max of 10 digits minimum of 4 digits).



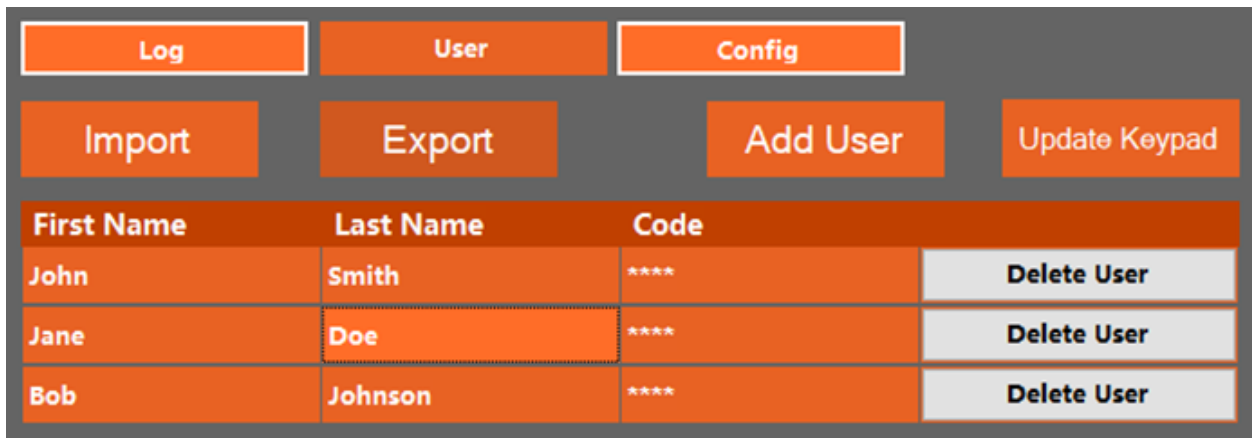
Update Keypad:

“Update Keypad” button will export the users from the table view to the KSK device. Be sure to Update Keypad before logging out of Application

Important: to complete this Add User update you must click “Update Keypad” button. Top right of screen.

Then to refresh the Add user Screen you must leave the user Screen by clicking “Config button” upper right.

Then you must click the “User” button to navigate back to the User screen and see the refreshed list of users that are saved to the KSK device.



NOTE: None of the values for First name, Last name or User code can be left blank prior to sending the update User name and information to the KSK device you are Wi-Fi connected to OR this upload to the KSK device will Fail. No duplicate codes can be sent to the KSK device.

Configuration of KSK Device:

The “Config” button or Configuration screen will display the KSK device current settings. Changes to the list of settings are available through clicking dropdown/ text boxes for each category. Example Sleep Time setting drop down menu, Logout Timeout menu etc.

Category	Setting	Value
Device	Device	HX80
Timeouts	Sleep Timeout	30 Seconds (Default)
Timeouts	Logout Timeout	30 Seconds
Security	Code Required?	Yes (Default)
Security	Lockout Attempts	No Lockout (Default)
Language	Language Setting	English (Default)
Owner Info	Owner First Name	John
Owner Info	Owner Last Name	Smith
Owner Info	Owner Code	*****

Application Software Configuration screen.

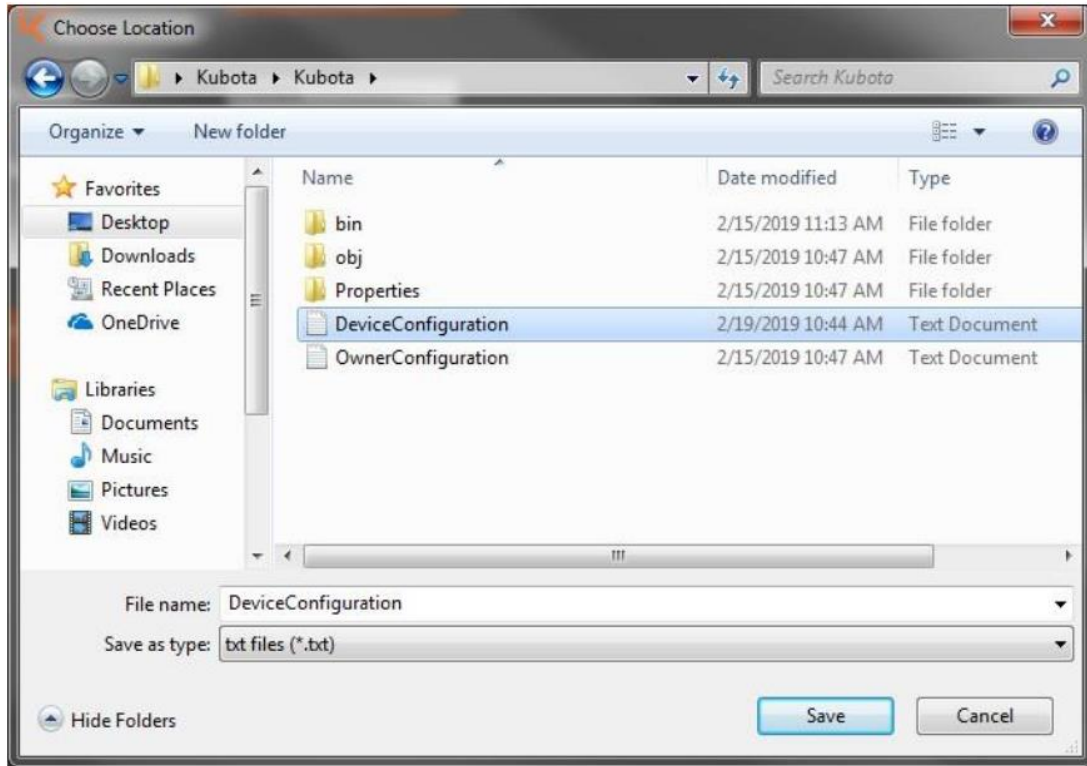
Changing Device Settings or Owner Settings:

Use the drop down menus to select each setting for the KSK Keypad. From this screen you can also edit your Owner information. **Note:** When new Owner settings are saved you will be required to log back into the KSK Application.

Export Device Settings or Import Owner Settings:

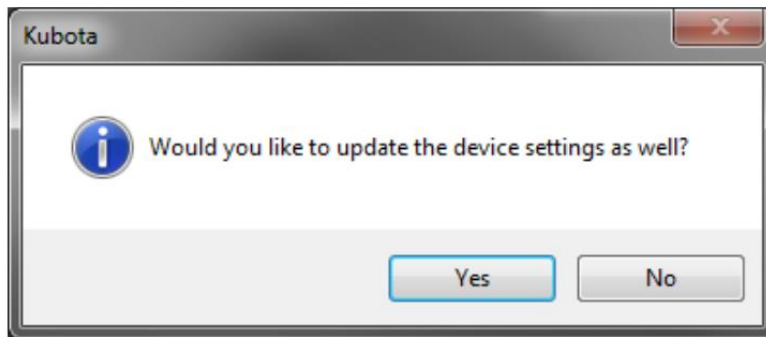
The “Export Device Settings” and “Export User Settings” buttons allow you to save these settings on your PC as a .txt file. After saving these files they can be imported to other devices in your fleet. This prevents you from having to manually change the settings for every single device.

When you click the “Export Device Settings” button a dialog window will open. You can click the location you would like to save the .txt text file you are creating.



After you click save you will receive the prompt below.

Would you like to update the device settings as well. Click Yes.

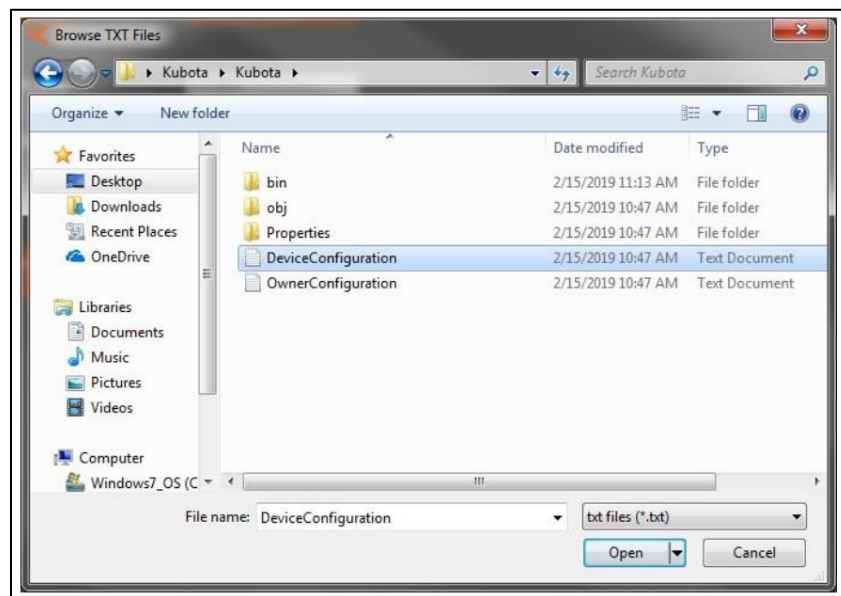


Import Device Settings or Owner Settings:

The 'Import Device Settings' button imports the device settings from a local .txt file on your PC to the Wi-Fi connected KSK device. The data in the .txt file must match in format to the Config screen. That is why you should not edit the .txt file. You only store the .txt file from a prior Export and then you Import that .txt file onto new KSK devices. **Note:** You cannot make changes to the device settings in the .txt file. The .txt file can only be read by the KSK Application.

If the .txt file format does not match the expected fields in the Application Software Config Screen the Import function will fail.

When you click "Import Device Settings" you will see an open dialog window. You then select the .txt file that is the device settings file you want to upload or Import to your KSK device.



Save Settings (KSK Device):

"Save Device Settings" button will export the configuration settings to the KSK device you are Wi-Fi connected to. You will need to make sure all drop down fields have the settings you want them to have. The KSK device will not accept the upload from Application software to KSK device if any field is left blank.

You then verify the changes you have made to the Config screen by navigating away from the Config screen by clicking the "User". Then navigate back to the Configuration screen by clicking the "Config" button. Each time you click the "Config" button or the "User" button the Application software pulls the data that is on the KSK Device you are Wi-Fi connected to. This will allow you to verify the Config settings you have set with the Application software are now on the KSK device.



The Update Validation dialog box will ask you if you are ready to Update Device Settings.

Click Yes.



Then you will see the Device settings has been updated dialog box.

Click OK.

Reset Configuration Settings on KSK device to default:

The "Reset Device to Default" button in the Application software on the Config screen will reset the Configuration settings dropdown boxes such as Sleep Timeout, Logout Timeout etc. to the factory default setting.


After clicking the "Reset Device to Default" button you must click "Save Device Settings" button to upload those default settings to the KSK device you are Wi-Fi connected to.

Save Owner Settings:

The “Save Owner Settings” button will export the Owner settings you have typed into the Owner First Name, Owner Last Name and Owner Code fields on the Config screen in the Application Software to the KSK device you are Wi-Fi connected to.

You must click Save Owner Settings button to upload these settings to the KSK device you are Wi-Fi connected to.

All fields must have a value and cannot be left blank. The upload from the Application software to the Wi-Fi connected KSK device will not complete if any field is left blank.

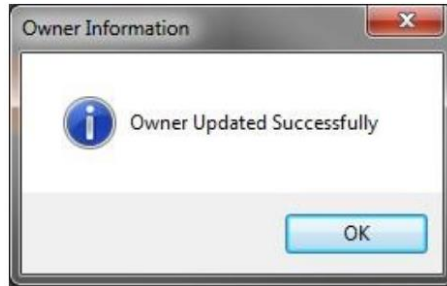


Config screen showing the “Save Owner Settings” button.

After you click “Save Owner Settings” button you will receive a verification dialog box example shown below.

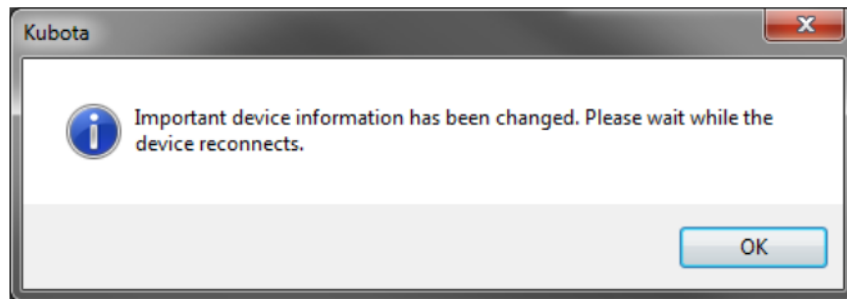


Dialog box on your PC. Verifying that you want to Save/ update Owner Settings to the KSK device you are Wi-Fi connected to.



Dialog box confirming that the upload from your Application Software to the KSK device you are Wi-Fi connected to has Updated Successfully.

If you have changed your Owner Code during the Owner settings update your new Owner Code will be the code you will enter the next time you log into your Application Software on your PC to Wi-Fi connect to your KSK device.



Dialog box showing that Important KSK device information has been changed. The Application Software is automatically re-connecting through Wi-Fi to the KSK Device.



Dialog box confirming that the Wi-Fi connection has be re-connected from the Application software on your PC to the KSK device.

Note: if you do not receive all of these dialog boxes the update was not successful.

Any dialog box that states you have unsaved changes will mean that you have not uploaded, saved or sent the changes you made to the KSK device you are Wi-Fi connecting to.

Menu Bar:

At the top of Application Software screen on your PC there are multiple dropdown menus including “**File**” and “**Help**” and the main categories.



Under the “**File**” menu there is the “**Log Out**” menu selection. The “Log Out” menu selection will disconnect the disconnect the Wi-Fi connection and will close out the Application Software. The “**Exit**” menu selection will safely close the Application Software.



The “**Help**” Tab will give access to this User Guide Document.