

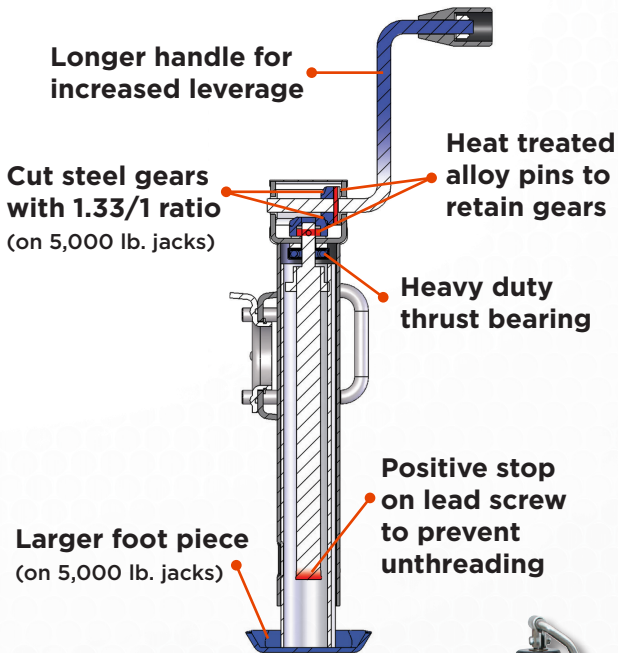


TRAILER JACKS & LINKAGE





TRAILER JACKS



Jacks For Every Need

- Our program offers most popular sizes and styles
- The lift capacities range from 1,000 to 5,000 pounds
- Kubota jacks are precision engineered with a smooth turning handle, dependable inner screw and a large foot plate
- Top wind and side wind jacks are available with lift heights from 10" to 15"
- Our tube mount jacks come with a lanyard lock pin and weld on tube mount
- Four mounting styles: Bolt on flange, Flange, A-Frame and Tube
- Complete line of replacement parts



77700-07986

77700-07978

77700-07983

77700-07976

77700-07979

77700-07981

77700-07987

Topwind Jacks

2,000 lb.

Item No.	Mounting Style	Lift Height	Retracted	Extended	Lift Capacity	Static Capacity	Weight
77700-07986	Flange (weld) mount	10 in.	11.25 in.	21.25 in.	2,000 lb.	3,000 lb.	15 lb.
77700-07978	Tubular mount	10 in.	11.25 in.	21.25 in.	2,000 lb.	3,000 lb.	14 lb.
77700-07983	Flange (weld) mount	15 in.	14.50 in.	30.50 in.	2,000 lb.	3,000 lb.	19 lb.
77700-07976	Tubular mount	15 in.	15.00 in.	30.50 in.	2,000 lb.	3,000 lb.	19 lb.

5,000 lb.

Item No.	Mounting Style	Lift Height	Retracted	Extended	Lift Capacity	Static Capacity	Weight
77700-07979	Tubular mount	15 in.	14.75 in.	30.5 in.	5,000 lb.	7,000 lb.	20 lb.
77700-07981	Tubular mount	10 in.			5,000 lb.	7,000 lb.	
77700-07987	A-frame	15 in.	10.25 in.	26 in.	5,000 lb.	7,000 lb.	14 lb.

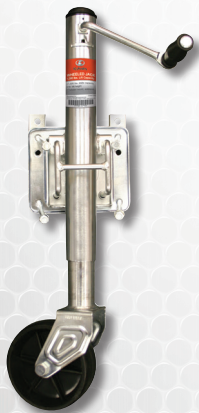
Features and Benefits:

- Manufactured to the highest standards and in excess of aftermarket standards to ensure long lasting reliability
- Powder coat paint finish on outer tubers—four times more weather and corrosion resistant than other painted jacks
- Strong large diameter pin on most models for excellent side load strength for larger equipment and in field applications
- Designed and engineered for compatibility with implements manufactured worldwide
- Larger foot plate than many competitive brands providing more stability



Trailer Jack Display Rack Components

77700-08294



77700-07984



77700-07974



77700-07985



77700-07977



77700-07975



77700-07980

Sidewind Jacks 1,000 lb.

Item No.	Mounting Style	Lift Height	Retracted	Extended	Lift Capacity	Static Capacity	Weight
77700-07984	Bolt-on flange mount	10 in.	13 in.	23.5 in.	1,000 lb.	1,000 lb.	15 lb.

2,000 lb.

Item No.	Mounting Style	Lift Height	Retracted	Extended	Lift Capacity	Static Capacity	Weight
77700-07974	Tubular mount	10 in.	11.25 in.	21.50 in.	2,000 lb.	3,000 lb.	14 lb.
77700-07985	Flange (weld) mount	10 in.			2,000 lb.	3,000 lb.	

5,000 lb.

Item No.	Mounting Style	Lift Height	Retracted	Extended	Lift Capacity	Static Capacity	Weight
77700-07977	Tubular mount	10 in.	10.75 in.	20.75 in.	5,000 lb.	7,000 lb.	17 lb.
77700-07975	Tubular mount	15 in.	15.50 in.	31.50 in.	5,000 lb.	7,000 lb.	20 lb.
77700-07980	Direct-weld mount (jack must be welded directly to trailer frame)	15 in.	24.75 in.	52.5 in.	5,000 lb.	8,000 lb.	26 lb.

TRAILER JACKS

Replacement Parts

Item No.	Description	Fits Utility Jacks	Weight
77700-07982	Weld-on tube mount — 5/8 in.	Tube mount jacks with 5/8 in. tube	0.85 lb.
77700-07988	Dent tube — 5/8 in. tube	Tube mount jacks with 5/8 in. tube hole	0.50 lb.
77700-07989	Sidewind handle assembly	5,000 lb. sidewind jacks	1.70 lb.
77700-07990	Sidewind handle assembly	2,000 lb. sidewind jacks	1.35 lb.
77700-07991	Topwind handle assembly	All 2,000 lb. and 5,000 lb. topwind jacks	1.00 lb.
77700-07992	Removable footbase repair kit	All 2,000 lb. and 5,000 lb. A-frame jacks	1.95 lb.
77700-07993	Flange mount L-bracket	All flange mounts to 5,000 lb.	1.30 lb.
77700-07994	Circlip retaining ring	All flange mounts to 5,000 lb.	0.05 lb.



77700-07982



77700-07988



77700-07989



77700-07990



77700-07991



77700-07992



77700-07993



77700-07994

Tough & Reliable For Farm, Ranch, Construction

Designed and engineered totally forged with heat treated pins. Total forging provides better grain structure without built-in stress and more consistency in strength, quality and performance. Clevises are available with black powder coat paint and clevis pins are yellow zinc dichromate.

- High strength and excellent corrosion protection for long life
- Farm, straight, twisted, utility, and general purpose clevises available for use in farm, ranch, construction and homeowner applications
- A variety of sizes are available to fit the needs of any job
- Tractor drawbar grab hook is formed from medium carbon steel, quenched and tempered
- Do not exceed working load limits
- Clevises and tractor drawbar grab hook are not for lifting

Straight Clevis

Item No.	Pin Diameter	Usable Length	Body Diameter	Clevis Opening	Working Load Limit
70000-73964	5/8"	3-3/4"	3/4"	1-5/16"	12,000 lbs
70000-73965	3/4"	3-1/4"	7/8"	1-5/16"	16,000 lbs
70000-73966	3/4"	4-1/4"	7/8"	1-5/16"	16,000 lbs
70000-73968	1"	5-5/16"	1"	2-1/8"	25,000 lbs



70000-73964

Twisted Clevis

Item No.	Pin Diameter	Usable Length	Body Diameter	Clevis Opening	Working Load Limit
70000-73970	3/4"	3"	7/8"	1-5/16"	16,000 lbs
70000-73971	3/4"	3-7/8"	7/8"	1-5/16"	16,000 lbs
70000-73972	7/8"	4-1/4"	15/16"	1-7/16"	20,000 lbs



70000-73970

Utility Clevis

Item No.	Pin Diameter	Usable Length	Body Diameter	Clevis Opening	Working Load Limit
70000-73976	5/16"	7/8"	1/4"	15/32"	1,000 lbs
70000-73977	3/8"	1"	5/16"	17/32"	1,500 lbs
70000-73978	7/16"	1-1/4"	3/8"	21/32"	2,000 lbs
70000-73979	1/2"	1-1/2"	7/16"	23/32"	3,000 lbs
70000-73980	5/8"	1-11/16"	1/2"	13/16"	6,000 lbs



70000-73976



70000-73974

General Purpose Clevis

Item No.	Pin Diameter	Usable Length	Body Diameter	Clevis Opening	Working Load Limit
70000-73974	3/4"	6-3/16"	3/4"	2-1/2"	10,000 lbs

Farm Clevis

Item No.	Pin Diameter	Usable Length	Body Diameter	Clevis Opening	Working Load Limit
70000-73981	7/16"	1-7/16"	3/8"	23/32"	3,000 lbs
70000-73983	5/8"	1-15/16"	1/2"	13/16"	6,500 lbs
70000-73984	7/8"	3"	3/4"	1-1/4"	13,000 lbs



70000-73981

Tractor Grab Hook Straight Clevis

Item No.	Pin Diameter	Usable Length	Working Load Limit
70000-73975	For all tractor drawbars up to 1-5/8" thick	For use with 5/16" to 1/2" chain	9,000 lbs



70000-73975

ACCESSORIES

NEW



77700-11861

Cow Bell

- Cow bells are used for ranching and sporting events.
- The long distance Cow Bells produces a sharp tone and can be heard at long distances.
- The red handle cow bell produces a sharper tone and has a large vinyl coated handle for easier grip.
- Both are suited for use at the ranch or sporting events.

Item No.	Description	Height	Weight
77700-11860	Red Handle	6.75"	1.05 lbs
77700-11861	3-1/8 in.	3 1/8"	0.4 lbs

Rain Cap

- Raincaps fit most tractors, construction equipment and engines.
- Opens with the slightest pressure and closes the instant exhaust stops.
- Engineered and balanced to close tightly.
- Easy one bolt installation with a gray powder coat finish.
- Available in O.D. exhaust sizes from 2 in. to 5 in.

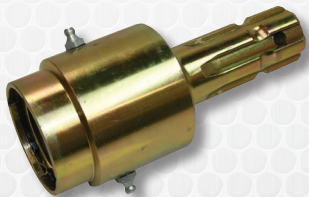
Item No.	Description	Weight
77700-11862	2 in	0.9 lbs
77700-11863	3 in	1.08 lbs
77700-11864	4 in	1.60 lbs
77700-11865	5 in	1.82 lbs

NEW



77700-11862

NEW



Over Run Clutch

- Designed to protect operators and machinery from situations when the inertia of a PTO-driven implement exceeds and overruns the tractor PTO speed.
- Yellow zinc dichromate plating for corrosion resistance.
- Maximum overrun speed of 1000 rpm.

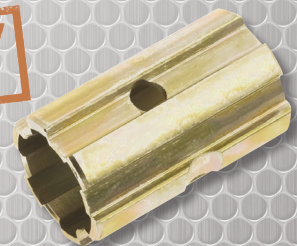
Item No.	Description	Height	Weight
77700-11866	Over Run Clutch, PTO	6.5"	5.0 lbs

ADP Sleeve

- The PTO sleeve increases the diameter of a tractor PTO shaft to fit an implement's PTO shaft.
- Fits all tractors excluding Fords. Yellow zinc dichromate plated.

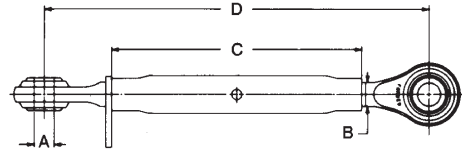
Item No.	Description	Height	Weight
77700-11859	2 1/4 in ADP Sleeve, PTO	6.5"	5.0 lbs

NEW



Forged Top Links

- Quality forged top links available in Category 0, 1 and 2
- All top links are yellow zinc plated
- The ends are clear zinc plated



Item No.	Cat.	A Pin Hole Size	B Thread Diameter	C Body Length	D Closed Length	Open Length	Color
77700-06378	0	5/8"	3/4" NC	7-5/8"	11"	16"	Plated
70000-16652	1	3/4"	1-1/8" NC	13-1/4"	17"	26"	Plated
70000-16576	1	3/4"	1-1/8" NC	16"	21"	28"	Plated
70000-73347	2	1"	1-1/8" NC	16"	21"	31"	Plated
77700-11867	2	2"	1-1/8" NC	16"	21"	30"	Plated
77700-11868	1	1"	1-1/8" NC	16"	21"	28"	Plated

NEW
NEW



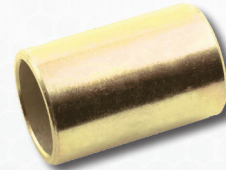
Forged Weld-on Top Link Ends

- High-quality weld-on top link ball sockets in Category 1 and 2 sizes

Item No.	Description
77700-06417	Category 1 forged top link end, 3/4" pin hole
77700-06418	Category 2 forged top link end, 1" pin hole

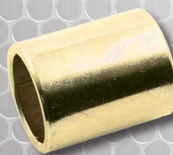
Top Link Reducer Bushings

- Used in the pin hole of a top link to allow a smaller category pin to fit
- Yellow zinc dichromate plated
- See page 15 for countertop display image/info



Item No.	Cat.	Description	Outside Diameter	Inside Diameter	Length
70000-16633	0-1	Fits all Cat. 0 top link pins	3/4"	5/8"	1-5/8"
70000-16635	1-2	Fits all Cat. 1 top link pins; replaces Ford C7NN6993A	1"	3/4"	1-15/16"
70000-73597	1-2	Fits all Cat. 1 top link pins; short	1"	3/4"	1-5/8"
70000-16637	2-3	Fits all Cat. 2 top link pins	1-1/4"	1"	1-15/16"
77700-11858	2	Adapter Brushing for Cat. 2 Quick Hitch	2"	1-1/8"	4"
77700-11870	3-2	Fits all Cat. 2 top link pins	1-1/4"	1"	1-15/16"

NEW
NEW



Lift Arm Reducer Bushings

- Used in the pin hole of a lift arm to allow a smaller category pin to fit
- Yellow zinc dichromate plated
- See page 15 for countertop display image/info

Item No.	Cat.	Description	Outside Diameter	Inside Diameter	Length
70000-73314	0-1	Fits all Cat. 0 lift arm pins	7/8"	5/8"	1-3/8"
70000-16632	1-2	Fits all Cat. 1 lift arm pins; Ford C7NN6992A	1-1/8"	7/8"	1-3/4"
70000-16634	1-2	Fits all Cat. 1 lift arm pins; replaces John Deere F2684	1-1/8"	7/8"	1-3/8"
70000-16636	2-3	Fits all Cat. 2 lift arm pins	1-7/16"	1-1/8"	1-3/4"
70000-16638	2-3	Fits all Cat. 2 lift arm pins; 15/32" lynch pin hole	1-7/16"	1-7/16"	2-1/2"
77700-11871	3-2	Fits all Cat. 2 lift arm pins with a lynch pin hole	1-7/16"	1-1/8"	2-1/2"

NEW

LINKAGE

Top Link & Lift Arm Replacement Balls

- Top link and lift arm balls for Ford, John Deere, Oliver and other tractors
- Designed to replace original balls
- Yellow zinc dichromate plated



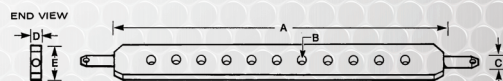
Item No.	Cat.	Description	Pin Hole Size	Length Thru Bore	Ball Diameter
70000-16587	1	John Deere & Oliver top link ball; replaces Deere F2680, Oliver 105968A	3/4"	1-3/4"	2"
70000-16588	2	John Deere & Oliver top link ball; replaces Deere F2681, Oliver 104585A	1"	1-3/4"	2"
70000-16589	1	Ford lift arm ball; replaces Ford DDN995233; fits Ford 5000	7/8"	1-3/8"	2-1/4"
70000-16590	2	Ford lift arm ball; replaces Ford C5NN557A; fits Ford 3000, 4000, 5000	1-1/8"	1-3/4"	2-1/4"
70000-16592	2	Oliver lift arm ball; replaces Oliver 104591A; fits all models with claw type lift arm	1-1/8"	1-3/4"	2"
70000-73949	2	Ford lift arm ball; narrow width; replaces C5NN557B	1-1/8"	1-3/8"	2-1/4"

Drawbars

- One piece 3-point hitch cross drawbars to fit Cat. 0 through Cat. 2 tractors



Drawbar



Item No.	Cat.	Number of Holes	A Lift Arm Spacing	B Hole Diameter	C Pin Diameter	D Thickness	E Width	Color
70000-73951	0	7	20"	5/8"	5/8"	5/8"	2"	Black
70000-16651	0/1	7	20"	3/4"	7/8"	1"	2-1/2"	Black
70000-16594	1	11	26"	3/4"	7/8"	1"	2-1/2"	Black
70000-16597	2	11	26"	3/4"	1-1/8"	1-1/4"	3"	Black
77700-06419	Drawbar lock for category 1 tractors; prevents drawbar on 3-point hitch from rotating							



Drawbar Lock

- Clevis type draw pins are for use with implements with yoke type mountings.
- Our CAT 2 & 3 clevis draw pins are forged and adjustable and can be used for a variety of applications.
- The pin diameter is 1-1/8" & 1-7/16" with a useable length of 3-3/8" & 4-1/4". Yellow zinc dichromate plated.

NEW



Item No.	Description	Length	Weight
77700-11869	CAT 3 Draw Pin Universal	5 7/8"	3.5lbs

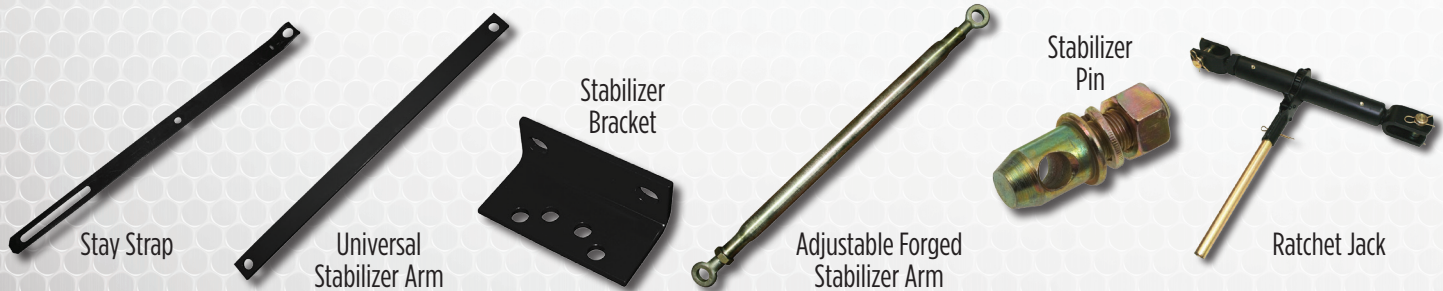
Lift Arms & Lift Arm Parts

Item No.	Description
70000-16593	Category 1 right or left hand forged lift arm; fits all Ferguson models, Ford 2N, 8N, 9N, NAA, Massey-Ferguson 35, 50, Oliver 550 and Oliver 3-point conversion, John Deere 1010; 7/8" pin holes; 31-3/4" ball centers; 34-1/2" overall length; painted black
70000-73317	Category 1 forged right or left hand straight lift arm repair end; 7/8" pin hole; 4" overall length
70000-73599	Category 2 forged right or left straight lift arm repair end; 1-1/8" pin hole; 5" overall length
70000-16574	Category 1 lift arm leveling assembly; 18-1/2" closed; 25" open length; 7/8" NF thread diameter; replaces Ford NCA577A



Stabilizer Arms, Bracket, Stabilizer Pin & Ratchet Jack

- Replacement stabilizer arms for stabilizer kits and a variety of tractors. Stabilizer arms increase the stability of the tractor lift arms. Stay straps for Cat. 1 tractors are used to maintain an implement at a set height
- Stabilizer stub pins for Ford, Ferguson and other stabilizer kits
- Yellow zinc dichromate plated and black powder coat paint
- Ratchet jacks have multiple uses including the adjustment of implements and equipment. They replace hydraulic cylinders or old screw jacks in those applications where infrequent adjustment is needed

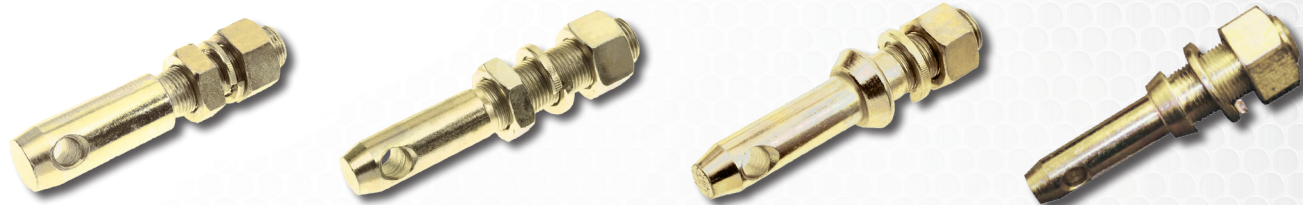


Item No.	Description
70000-16599	Upper stay strap for Category 1; fits all Ferguson models, Ford 2N, 8N, 9N, NAA, 600, 700, 800, 900, Oliver 550 and all Oliver 3-point conversions, Massey-Ferguson 35 and 50; painted black
70000-16600	Lower stay strap for Category 1; fits all Ferguson models, Ford 2N, 8N, 9N, NAA, 600, 700, 800, 900, Oliver 550 and all Oliver 3-point conversions, and Massey-Ferguson 35 and 50; painted black
70000-16603	Right or left universal stabilizer arm; 7/8" pin holes on 31-9/16" centers; painted black
70000-16604	Right or left universal stabilizer arm; replaces Massey-Ferguson ST96362358; 7/8" pin holes on 33-1/8" centers; painted black
70000-16605	Heavy duty adjustable forged stabilizer arm; fits all Ferguson models, Ford 2N, 8N, 9N, NAA, 600, Massey-Ferguson 35, 50, 175, 65, 135, 150, 165, 180; adjustable from 28-1/2" to 36"; 7/8" pin holes; 7/8" NF threads; yellow zinc plated
70000-16606	Right or left universal stabilizer bracket; Ferguson and Ford stabilizer kits; accommodates 70000-16629 stabilizer stub pin; painted black
70000-16629	Stabilizer Pin: Pin Diameter 7/8", Usable Length 3/8", Overall Length 2-5/8", Thread Diameter 5/8" NF
70000-16575	Ratchet Jack: Heavy duty ratchet jack with 1-1/4" ACME threads and grease zerks; adjustable from 20" closed to 28" open; 1" clevis pins, clip pins and handle included; color black

LINKAGE

Draw Pins (Lift Arm Pins)

- Forged and adjustable Category 0 through 2 draw pins for a variety of applications
- All pins are yellow zinc dichromate plated
- See page 15 for countertop display image/info



Item No.	Cat.	Description	Pin Diameter	Usable Length	Overall Length	Thread Diameter	Thread Length
70000-16614	0	Adjustable; universal	5/8"	Adjustable	3-7/8"	5/8" NF	2"
70000-16608	1	Adjustable; universal	7/8"	Adjustable	5"	7/8" NF	2-5/8"
70000-16610	1	Forged; universal	7/8"	1-3/4"	5-1/2"	7/8" NF	1-5/8"
70000-16613	1	Adjustable; universal; extra long	7/8"	Adjustable	6-1/4"	7/8" NF	3-1/2"
70000-73952	1	Forged; extra long	7/8"	2-1/4"	6-1/2"	7/8" NF	2-1/4"
70000-73425	1-2	Forged; to work Cat. 1 implements on Cat. 2 tractor	1-1/8"	1-13/16"	5-1/4"	7/8" NF	1-5/8"
70000-16609	1-2	Adjustable; to work cat. 1 implements on cat. 2 tractors	1-1/8"	Adjustable	5-1/4"	7/8" NF	2-7/16"
70000-16607	2	Adjustable; universal	1-1/8"	Adjustable	6-1/8"	1-1/8" NF	3-3/8"
70000-16612	2	Forged; universal	1-1/8"	1-3/4"	6-1/8"	1-1/8" NF	2-3/8"



Top Link Pins

- Sizes and styles for Category 0 Through 2 tractors
- Yellow zinc dichromate plated
- See page 15 for countertop display image/info

Item No.	Cat.	Description	Pin Diameter	Usable Length	Overall Length
70000-16624	0	Top link pin	5/8"	3"	4-7/16"
70000-16621	1	Replaces Ford 9N-560, Ferguson 195647M1	3/4"	2-3/4"	4-1/2"
70000-16622	1	Long top link pin; replaces Ferguson 195589M1, AC339942	3/4"	3-7/8"	5-1/2"
70000-16626	1	Extra long top link pin; replaces Ford E381T9	3/4"	4-3/4"	6-3/8"
70000-73956	2	Replaces Ford C5NN560A, MF185873M91, AC2090149/239888	1"	3-9/16"	5-1/4"
70000-16623	2	Replaces Ford C5NN486A	1"	4-3/8"	6"

Swivel Handle Forged Hitch Pins

- Forged head hitch pin with swivel handle and zinc plated "R" clip pin
- More than 25% stronger than Grade 2
- Yellow zinc dichromate plated
- See page 15 for countertop display image/info



Item No.	Pin Diameter	Usable Length	Overall Length
77700-06397	3/8"	3-1/2"	5"
70000-73957	3/8"	4-1/4"	5-3/4"
77700-06398	1/2"	3-1/2"	5"
70000-73426	1/2"	4-1/4"	5-3/4"
70000-73428	5/8"	4-1/4"	5-3/4"
70000-16641	3/4"	4-1/4"	5-3/4"
77700-06393	1"	4-1/4"	5-3/4"
70000-73427	1/2"	6-1/4"	7-3/4"
70000-16640	5/8"	6-1/4"	7-3/4"
70000-16642	3/4"	6-1/4"	7-3/4"
70000-73958	7/8"	4-1/4"	5-3/4"
70000-16643	7/8"	6-1/4"	7-3/4"
70000-16644	1"	6-1/4"	7-3/4"
70000-73429	1-1/8"	6-1/4"	7-3/4"
70000-73576	1-1/4"	6-1/4"	7-3/4"

Bent Hitch Pins

- These pins have numerous farm, lawn and garden and industrial applications
- Complete with zinc plated "R" clip pin
- Yellow zinc dichromate plated

Item No.	Pin Diameter	Usable Length
77700-06394	1/2"	3"
77700-06395	5/8"	3"
77700-06396	3/4"	3-1/2"



Double Lok Hitch

- These grade 5 performance hitch pins are designed with a quick release handle to allow easy removal while ensuring the pin will remain in place.
- The pin and handle are powder coated with zinc plated locks.
- They come with a heavy duty red handle



Item No.	Description	Length	Weight
77700-11872	3/4" by 6"	6"	2.6lbs
77700-11873	7/8" by 6"	6"	2.9lbs
77700-11874	1 1/8" by 7"	7"	4.1lbs
77700-11875	1.25" by 7"	7"	4.6lbs
77700-11876	5/8" by 4.5"	4.5"	2.0lbs

Red Head Hitch Pins

- Designed for today's demanding applications, these one piece, grade 5 performance, forged hitch pins are made from high strength steel and heat treated
- Pin has black powder coating with a red vinyl coated head and handle. Zinc plated "R" clip pin included
- See page 15 for countertop display image/info



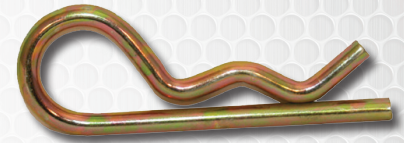
Item No.	Pin Diameter	Usable Length	Overall Length
70000-73959	1/2"	3-5/8"	6-5/8"
70000-73960	5/8"	4"	7"
70050-94463	5/8"	5-3/4"	9"
70000-73754	3/4"	4"	7"
70000-73750	3/4"	6-1/2"	9-1/2"
70000-73752	7/8"	6-1/2"	9-1/2"
70000-73751	1"	7-1/2"	10"
70000-73755	1-1/8"	8-1/2"	11-1/2"
77700-06413	1-1/4"	8-1/2"	11-1/2"
7000-73757	1-1/2"	8-1/2"	11-1/2"

LINKAGE

“R” Clip Pins & “R” Clip Pin Assortment

- Available in the most popular sizes for farm and other applications
- Yellow zinc dichromate plated spring wire

Item No.	Wire Diameter	Overall Length	Fits Pin Diameter
70000-16645	1/16"	1-9/16"	3/8" to 1/2"
70000-16646	3/32"	1-5/8"	1/4" to 1/2"
70000-16647	1/8"	1-15/16"	1/2" to 3/4"
70000-16648	5/32"	2-15/16"	5/8" to 1"
70000-16649	3/16"	3-3/4"	7/8" to 1-1/4"
70000-16650	1/4"	4"	3/4" to 1"
77700-06415	Hitch pin clip assortment in plastic blister box; contains 3- 70000-16646, 4- 70000-16647, 4- 70000-16648 and 3- 70000-16649		



77700-06415



Lynch Pins

- Fasteners for numerous farm and other applications
- Yellow zinc dichromate plated except for the S07091300 which has a black powder coated finish
- See page 15 for countertop display image/info

70000-73593



70000-73577



70000-73578

Item No.	Description	Pin Diameter	Usable Length	Shank Length	Overall Length
70000-73961	Standard	3/16"	1"	1-3/8"	1-5/8"
70000-73577	Standard	7/16"	1-1/4"	1-3/4"	2"
70000-73578	S07090100 with chain and cotter pin	7/16"	1-1/4"	1-3/4"	2"
70000-73579	Standard	1/4"	1-1/4"	1-3/4"	2-1/8"
77700-06383	Standard	5/16"	1-1/4"	1-3/4"	2-1/8"
70000-73593	Heavy duty; fits Cat. 1, 2 and 3 pins	7/16"	1-1/2"	1-3/4"	2-1/8"
77700-06420	Long: fits Cat. 1, 2 & 3 pins	7/16"	1-3/4"	2"	2-5/16"

Lock Pins

- Numerous farm, lawn and garden, and industrial applications
- Round and square loop styles
- Yellow zinc dichromate plated
- See page 15 for countertop display image/info

Item No.	Diameter	Usable Length	Wire Loop
70000-73866	1/4"	1-3/4"	Round
77700-06389	1/4"	2-1/2"	Round
70000-73867	5/16"	2-1/4"	Square
70000-73594	5/16"	2-1/4"	Round
70000-73869	3/8"	2-1/4"	Round
77700-06390	3/8"	2-1/4"	Square



Heavy Duty Storage Bins

- Organize parts, inventories, shorten repair times and minimize parts handling
- Heavy-duty bins securely stack atop each other, sit on shelving and hang from racks, panels, rails and carts
- Sturdy, one-piece construction is water, rust and corrosion-proof
- Molded of high-impact polypropylene, these bins are unaffected by weak acids and alkalis
- Guaranteed not to crack or break under normal load conditions as stated in the 1-year limited warranty

Item No.	Description	L x W x H	Pieces	Color
77700-10785	Storage Bin	14.75" x 5.5" x 5"	12	Black
77700-10786	Storage Bin	14.75" x 5.5" x 5"	12	Clear
77700-10787	Storage Bin	14.75" x 8.25" x 7"	12	Black
77700-10788	Storage Bin	14.75" x 16.5" x 7"	6	Black
77700-10789	Bin Divider	5.5" x 5"	6	Black
77700-10790	Bin Divider	8.25" & 16.5" x 7"	6	Black



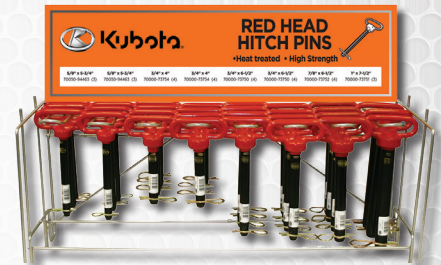
Pins not included



ASSORTMENTS

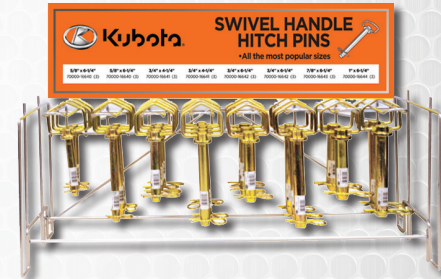
Hitch Pin Assortments Red Head

Item No.	Description
77700-06403	Grade 5 red head hitch pin assortment on wire rack with header sign; contains 6- 70050-94463, 8-70000-73754, 8- 70000-73750, 4- 70000-73752 and 3- 70000-73751
77700-06931	Red Head Hitch Pin Header Card ONLY



Swivel Handle

Item No.	Description
77700-06402	Forged swivel handle hitch pin assortment on wire rack with header sign; contains 6- 70000-16640, 6-70000-16641, 6- 70000-16642, 3- 70000-16643 and 3- 70000-16644
77700-06930	Swivel Handle Hitch Pin Header Card ONLY
77700-06846	Hitch Pin Wire Rack ONLY



Linkage Pin Assortment



Item No.	Description
77700-06401	Universal linkage pin assortment on wire rack with header sign; features the most popular Category 1 and 2 top link pins and draw pins; contains 4- 70000-16621, 4- 70000-16622, 3-70000-73956, 3- 70000-16623, 4- 70000-16608, 4-70000-16610, 3- 70000-16613, 3- 70000-73952, 3- 70000-16609, 3-70000-73425, 4- 70000-16607 and 3- 70000-16612
77700-06799	Linkage Pin Wire Rack ONLY
77700-06929	Linkage Pin Header Card ONLY

Bushing Assortment

Item No.	Description
77700-06400	Bushing assortment in counter top display carton with emphasis on Cat. 1-2; contains 10- 70000-16635, 28- 70000-16632, 6- 70000-16637, 6- 70000-16636 and 4- 70000-16638



Lynch Pin Assortment



Item No.	Description
77700-06399	Lynch pin assortment counter top display; contains 15- 77700-06383, 15- 70000-73961, 20- 70000-73593, 30- 70000-73577, 15- 70000-73578, 30- 70000-73579 and 10- 77700-06420

Lock Pin Assortment

Item No.	Description
	Lock Pin Display; contains 8- 70000-73867, 28- 70000-73594, 8- 70000-73869, 8- 77700-06389, 8- 77700-06390





Don't settle for less.
KEEP IT KUBOTA!



www.KubotaUSA.com

© 2020 Kubota Tractor Corporation.
Printed in USA 08/2020.
77700-08575

Kubota Tractor Corporation reserves the right to change the stated specifications without notice. The catalog is for descriptive purposes only and does not provide any express or implied warranty of any nature, including any warranty of merchantability or for a particular purpose. For complete operational information, the operator's manual should be consulted. Kubota Tractor Corporation supplies products and services to United States residents only. For information regarding Kubota products or services outside the United States, see Kubota Corporation's global web site.