

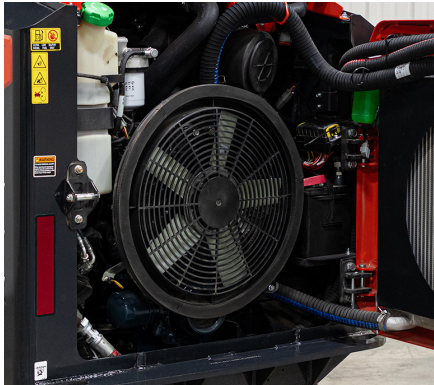


Kubota®

SVL50x | COMPACT TRACK LOADER



SVL50x: KEY FEATURES



50 HP* ENGINE

Increase your productivity with a high-performance DOC (Diesel Oxidation Catalyst) engine.



TWO SPEED DRIVE

Shift from 4.9 mph low gear to 9.9 mph high gear to get the job done faster.



UNDERCARRIAGE SUSPENSION

Front and rear idlers are rigid to ensure stable and accurate grading.

Suspended mid-rollers allow for machine stability when grading.



101.6"

The lift arm is optimally shaped for a tall hinge pin height of 101.6", making it easy to dump into most any container or truck.

* Engine HP Gross (SAE J1995)

Compact in size, but packed with performance, the 48" width of the SVL50x tackles big jobs in small spaces.



48"



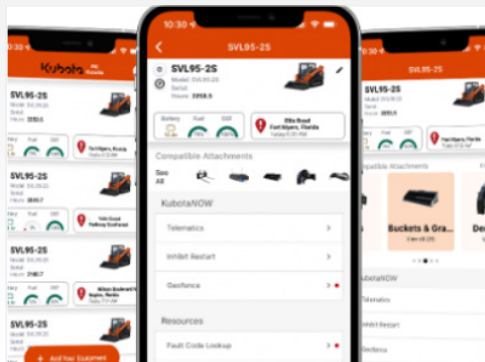
OPERATOR CONTROLS



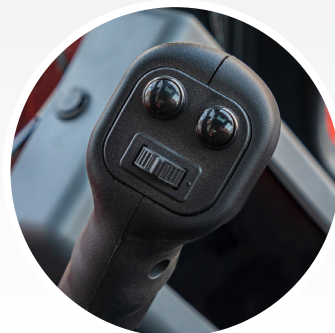
KEY FEATURES



- » 7" Full color touchscreen
- » Anti-stall, auto idle, Kubota Shockless Ride (KSR), creep mode
- » Adjustable drive response and loader speed settings can be changed on the homescreen to allow operator to tune the machine to the operator's preference



- » Standard telematics
- » 14 pin connector standard
- » Multi-function grips in the cab







COMFORT & DURABILITY

KEY FEATURES



- » One-piece sealed cab with overhead roll-up door helps prevent dirt, rain, debris, and noise from entering the operator space
- » Cab can be tilted, allowing easy maintenance access
- » Pressurized cab with AC for operator comfort



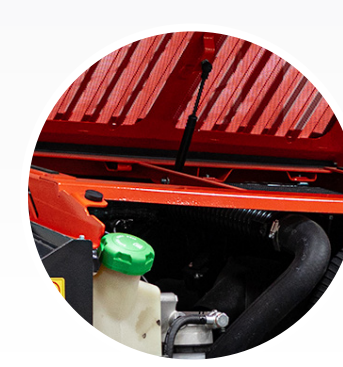
- » Counterweight available as an accessory to enhance lift performance
- » Multi-bar track treads for multiple terrains and applications
- » Suspended mid-rollers provide smooth ride



- » Rearview camera provides better visibility on the jobsite. Display constantly or only when in reverse.
- » Four LED lights can be adjusted to different angles to illuminate different areas near and around machine



- » Swing-out radiator and easy engine access for maintenance
- » Easy access fuel fill



SVL50x COMPACT TRACK LOADER

ENGINE		
Model Name		KUBOTA D1803-CR-T-I
Total Displacement (cu.cm)		111.4 (1.826 L)
Engine Power	SAE J1995 Gross	49.6 HP (36.5 kW/rpm)
	SAE J1349 Net	47.3 HP (34.8 kW/rpm)
Rated Speed		2700 rpm
Low Idling Speed		1300 rpm
DIMENSIONS		
Overall Length - Transport (w/Std Bucket Parallel to Ground)		117.6" (2.98 m)
Overall Length (w/o Bucket)		93.5" (2.37 m)
Overall Height		76.5" (1.94 m)
Overall Width w/Std Bucket		48.5" (1.23 m)
Operating Weight (w/ Operator)		5620 lb (2549 kg) Closed Cab
Max Dump Angle		35.7°
Turning Radius		49.5" (1.25 m)
Hinge Pin Height at Max. Lift		101.6" (2.58 m)
Reach at Max. Lift and 45° Dump		27" (68 cm)
Track Width		11.8" (29.9 cm)
Width of Track Gauge		36.2" (.919 m)
Length of Track on the Ground		48.9" (1.14m)
Ground Clearance		8.3" (21.1 cm)
Angle of Departure		31.5°
PERFORMANCE		
Rated Operating Capacity		1176 lb (35%)
Tipping Load		3360 lb (1,524 kg)
Breakout Force		Bucket: 4900 lb; Lift Arm: 3560 lb
Travel Speed		Fast: 9.9 mph; Slow: 4.9 mph
Ground Pressure (with Operator)		4.9 psi
BATTERY		
Battery Capacity		12V, RC 115, 650 CCA
Operating Temperature Range		5°F-140° F (continuous use); -22°F-167°F (short time use 2-3 hrs)
PRESSURE CONNECTION FOR ATTACHMENTS		
Max. Auxiliary Hydraulic Flow		20 gpm (75.7 lpm)
Max. Auxiliary Hydraulic Pressure		3000 psi
SERVICE & FILL CAPACITIES		
Fuel Tank Capacity		12.5 gal (47.3 L)
Hydraulic Tank Capacity		7 gal (26.5 L)



KubotaUSA.com

© 2024 Kubota Tractor Corporation

Kubota Tractor Corporation reserves the right to change the stated specifications without notice. The comparisons are for descriptive purposes only and does not provide any express or implied warranty of any nature, including any warranty of merchantability or for a particular purpose. For complete operational information, the operator's manual should be consulted. Kubota Tractor Corporation supplies products and services to United States residents only. For information regarding Kubota products or services outside the United States, see Kubota Corporation's global website.

9/23/24