



For Earth, For Life
Kubota



SVL75-2/SVL97-2s



KX040-4

From compact track loaders and excavators to wheel loaders and tractor/loader/backhoes, Kubota offers a wide range of reliable, high-performance construction equipment to get the job done right.

Kubota Tractor Corporation reserves the right to change the stated specifications without notice. This brochure is for descriptive purposes only and reasonable efforts were used to set forth the contained information; some items shown may be optional and some products shown may not be available at all dealerships. Kubota disclaims all representations and warranties, express or implied, or any liability from the use of this brochure. For complete warranty, safety and product information, consult your local Kubota dealer and the operator's manual. Power (HP/KW) and other specifications are based on various standards or recommended practices. For your safety, Kubota strongly recommends the use of a Rollover Protective Structure (ROPS) and seat belt in almost all applications. This brochure is intended for the United States and US territories only. For information regarding Kubota products or services outside these areas, see Kubota Corporation's global web site. Kubota does not provide parts, warranty or service for any Product which is re-sold or retailed in any country other than the country for which the Product(s) were designed or manufactured.



KUBOTA TRACTOR CORPORATION

1000 Kubota Drive, Grapevine, TX 76051 Tel 888-4 KUBOTA

Visit our web site at: kubotaUSA.com

©2020 Kubota Corporation



**Kubota
Genuine Parts**
for maximum
performance,
durability and
safety



SSV

KUBOTA SKID STEER LOADER SSV65/SSV75

Excellent power and exceptional operator comfort bring new levels of performance and productivity to Kubota's SSV-Series Skid Steer Loaders.



Taking performance to all new levels of comfort and efficiency

Outstanding performance, exceptional comfort, easy maintenance, and excellent durability make Kubota's new Skid Steer Loaders the clear choice for the job.

- Outstanding performance
- Exceptional comfort
- Easy maintenance

SSV65

Engine HP Gross (SAE J 1995): 64.0 hp (47.7 kW)
Rated operating capacity (50% of tipping load):
1950 lbs. (885 kg)
Bucket breakout force: 4839 lbs. (2195 kg)
Operating weight: 7099 lbs. (3220 kg)

SSV75

Engine HP Gross (SAE J 1995): 74.3 hp (55.4 kW)
Rated operating capacity (50% of tipping load):
2690 lbs. (1220 kg)
Bucket breakout force: 5884 lbs. (2669 kg)
Operating weight: 8245 lbs. (3740 kg)

SKID STEER LOADER

SSV65/SSV75

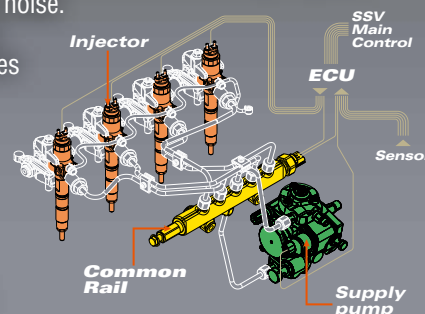


OUTSTANDING PERFORMANCE

Kubota engine

Common Rail System and Diesel Particulate Filter (DPF) Muffler

The Common Rail System (CRS) electronically controls the fuel injection timing and amount in stages rather than all at once for optimal combustion; resulting in greater efficiency, better fuel economy and less engine noise. The combination of Exhaust Gas Re-circulation (EGR) and Diesel Particulate Filter (DPF) reduces the emissions making the SSV Series engine Tier IV certified.



Powerful Kubota engine

The powerful and reliable Kubota-built engine gets the job done quickly and easily with 64.0 hp* (SSV65) or 74.3 hp* (SSV75).

* Engine HP Gross (SAE J 1995)

Automatic Regeneration System

Kubota's Automatic Regeneration System burns away the soot that accumulates in the DPF muffler to keep the muffler clean and let you work longer. For safety, the automatic regeneration can be turned off when operating in fire-prone areas.



Fast and smooth operational response

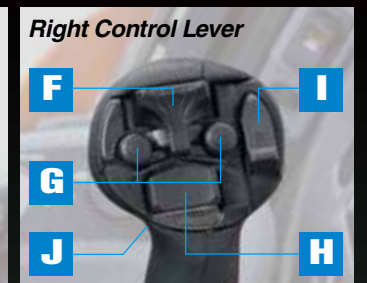
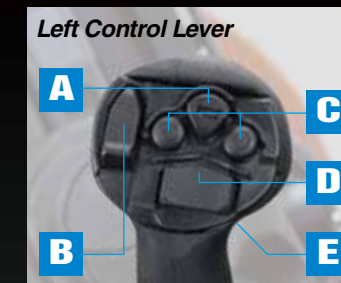
Multi-function levers (optional)

The optional multi-function levers provide fingertip control of all major vehicle and attachment operations, including the main hydraulic line and three electrical lines, letting you keep both hands on the levers at all times for optimal operating efficiency.



"Hand and foot control"

- A. Horn
- B. KSR (Kubota Shockless Ride)
- C. AUX1
- D. AUX Mode Change or Turn Signal
- E. Travel Speed
- F. AUX3
- G. AUX2
- H. Proportional Aux. Switch
- I. AUX Hold Switch



"ISO pilot control"

- A. Horn
- B. KSR (Kubota Shockless Ride)
- C. AUX1
- D. AUX3 or Turn Signal
- E. Travel Speed
- F. Proportional AUX Switch
- G. AUX Hold Switch
- H. AUX2
- I. AUX Mode Change
- J. Float Switch

High-flow hydraulics (optional)

The optional high-flow hydraulics system can handle attachments requiring extra hydraulic power. With high-flow hydraulics, the standard hydraulic flow increases from 18.0 gpm to 28.0 gpm on the SSV65 and from 20.9 to 30.4 gpm on the SSV75.

Dial and foot throttle

The dial throttle is ideal for jobs that require a constant engine speed, such as cold planning, trenching, and snow blowing, and conveniently located to let you change the engine speed setting while operating the levers. The foot throttle for ISO pilot control lets the operator vary engine speed for other applications.



Cooling system and variable fan

A hydraulically driven fan optimizes cooling and engine efficiency by varying the fan speed to maintain the appropriate water and oil temperatures. In cold weather the fan turns more slowly, allowing for faster engine warm-up.



Electronic Travel Torque Management (ISO pilot control)

Electronic Travel Torque Management System lets you work faster with more power. The ECU constantly monitors the load of the machine to optimally control hydraulic pump output according to the load, preventing engine stalls for smoother operation even under severe conditions.



OUTSTANDING PERFORMANCE

Kubota's unique vertical lift design

● Self-leveling function (optional)

The optional self-leveling function maintains the position of the bucket or fork as the attachment is raised, eliminating the need to manually adjust the angle during this operation.



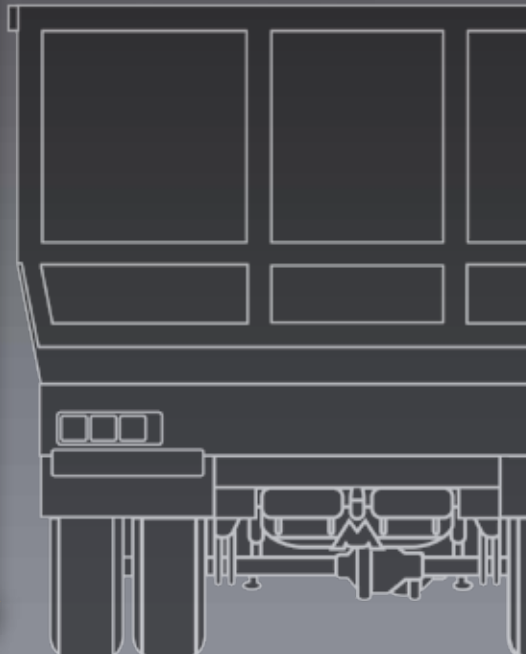
● Long reach and high bucket hinge pin height

Kubota's unique vertical lift design delivers an exceptionally long reach of 32.7 inches (SSV65) or 36.9 inches (SSV75). The tip of the arm is optimally shaped to provide an exceptionally high hinge-pin height of 121.5 inches (SSV65) or 128.3 inches (SSV75) for easier dumping into trucks and other lifting and dumping tasks.

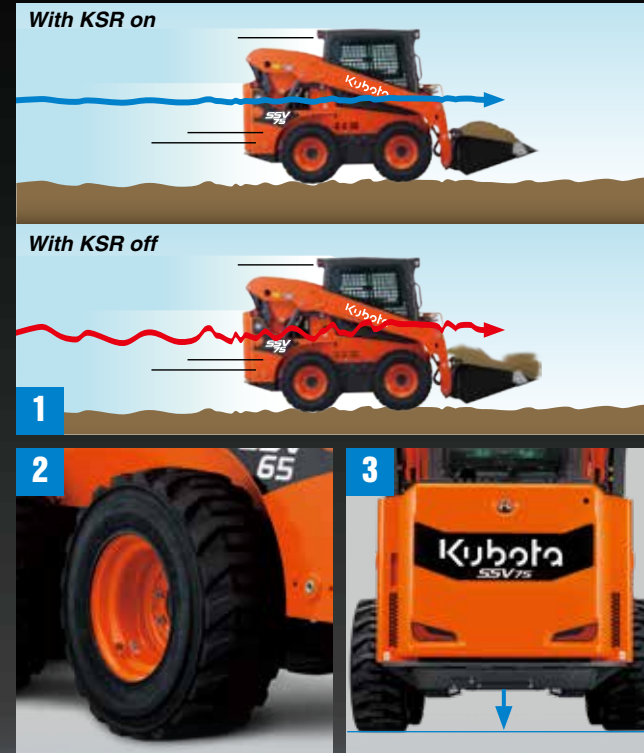


SSV65:
32.7 in (831 mm)
SSV75:
36.9 in (936 mm)

SSV65: 121.5 in (3085 mm)
SSV75: 128.3 in (3258 mm)



Travel performance



Standard two-speed travel

Shift from low gear at 6.9 mph (SSV65) / 7.4 mph (SSV75) to high gear at 11.1 mph (SSV65) / 11.8 mph (SSV75) to get the job done faster.

1. Kubota Shockless Ride (KSR) (optional)

KSR helps minimize fatigue by "smoothing out" the ride. You'll appreciate KSR when carrying heavy loads over rough terrain on the farm or at a construction job site.

2. Heavy duty tires

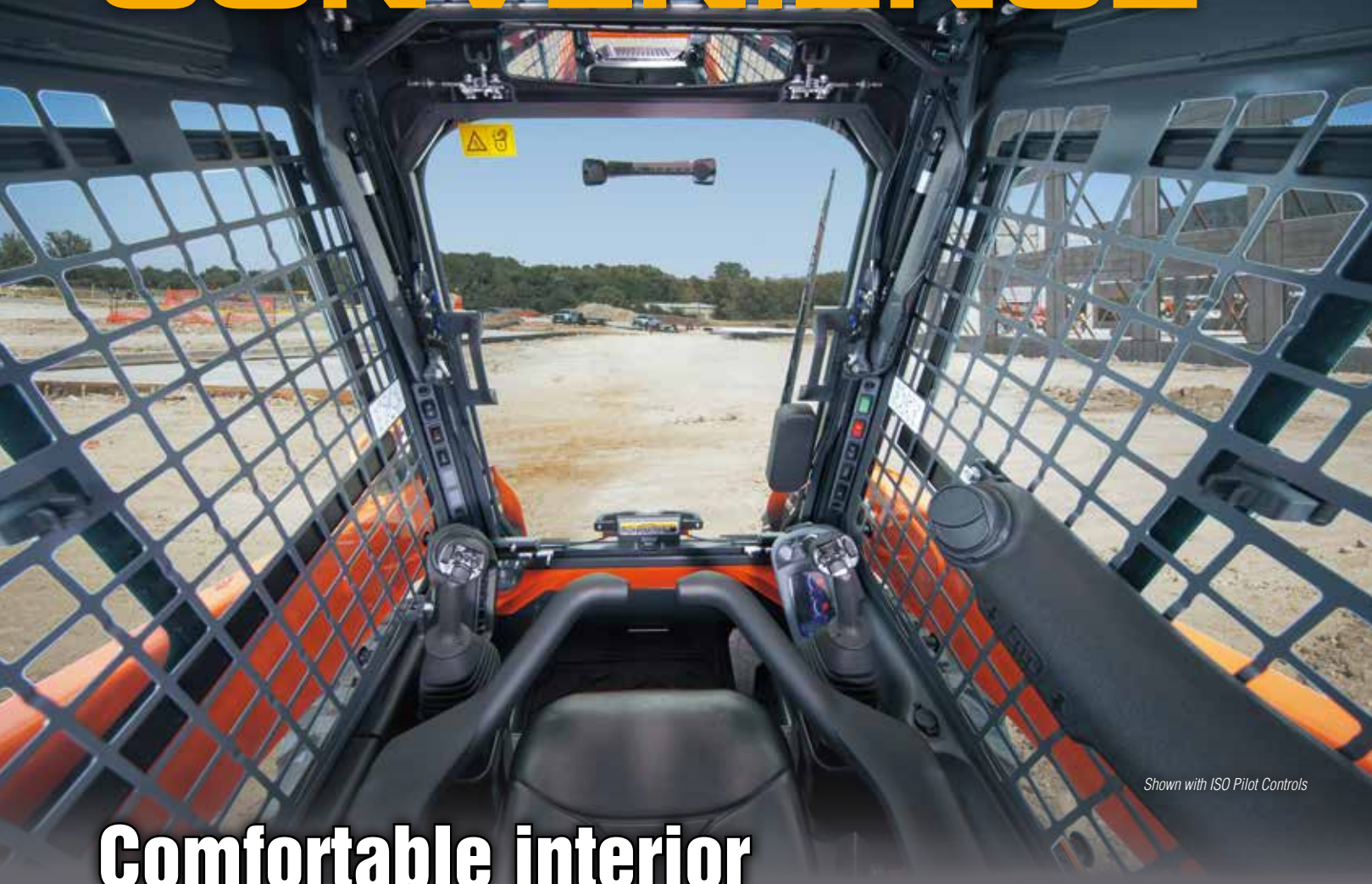
The crack-resistant heavy-duty tires feature a long-wearing tread pattern for superior grip and stability. The sidewalls are wider than the wheel to prevent stones and dirt from becoming wedged between them.

3. High ground clearance

Travel over large obstacles with ease, thanks to the high ground clearance of 7.6 inches (SSV65) or 8.1 inches (SSV75).



EXCEPTIONAL COMFORT AND CONVENIENCE



Shown with ISO Pilot Controls

Comfortable interior

- **Excellent 360° visibility**

The edges of the bucket can be seen from the seat. Improved visibility means greater safety on the job.

- **Ready for radio installation**

The SSV-series Factory cab comes prewired with speakers already installed, all that needs to be added is the radio.

- **12V power outlet**

A convenient 12V socket can be used for recharging mobile phones and powering other small electronic devices.

- **Suspension seat**

Wide and supportive, the SSV series' suspension seat will keep you working comfortably for hours.

- **Cup holder**

A cup holder under the right armrest conveniently holds drinks to quench your thirst while on the job.

- **Front Post Switch panels**

Switch panels on the front posts provide quick and convenient access to important functions.



Left

Right



Shown with ISO Pilot Controls

Air conditioning

- **Rear view mirror**

The wide mirror in the middle of the cabin ensures an excellent view of conditions behind the loader.

- **Ample legroom**

The spacious cabin provides ample legroom to help reduce operator fatigue.



Shown with ISO Pilot Controls

- **Optimized air conditioning**

Optimized airflow through nine vents provides outstanding cooling and heating comfort throughout the year.

- **Enhanced defrosting and demisting functions**

Ample airflow prevents the windows from fogging up or freezing during the cold months of the year.



EXCEPTIONAL SAFETY AND FUNCTIONALITY

Rugged exterior

Sliding front door

Standard on all closed-cab models and a dealer-installed option on the open-cab models, the tall and wide sliding front door can be opened regardless of the loader position, ensuring quick and easy entry and exit.



● ROPS/FOPS cabin

The OSHA-certified ROPS/FOPS cabin provides protection in the event of accidental rollovers or falling objects.

● Bolt-on replaceable handles

The handles are bolted to the cab to allow for quick and easy replacement in the event they become damaged.

Pressurized Cab

The pressurized cab keeps out dust, flying debris, and insects so that you can work comfortably with fewer distractions. Lower noise levels let you work long hours with minimal fatigue.



● Sliding side windows

The front sections of both side windows slide open towards the back of the cab.



● Side-window grille

The side-window grilles are installed on the inside to let you easily clean the outer glass surfaces of the windows.



● Rear lights

● Front and side work lights

● Turn signals (optional)

● Coupler protection

● Aux. hydraulic lines routed inside the arm

● Cylinder protection plates



EASY MAINTENANCE

Simple Access



● Routine checks

The rear door opens wide, providing access to all components for daily routine inspection.

- A. Engine oil filler tube
- B. Engine oil dipstick
- C. Battery
- D. Engine oil filter
- E. Diesel fuel filler tube
- F. Air cleaner indicator
- G. Air cleaner
- H. Coolant reserve tank
- I. Water separator
- J. Fuel filter
- K. Door lock

● Easy battery access

The battery is easily accessed without tools.



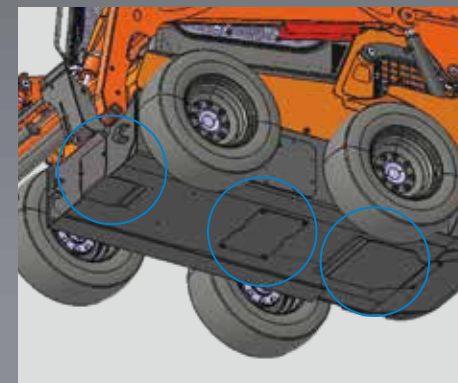
● Door enclosed fuel tank and easy refill access

No need to open the door. Simply lift a flap for quick and easy refueling.



● Mud-cleaning ports

Three mud-cleaning ports ensure fast and simple removal of mud and debris from the lower part of the machine.



Top-mounted radiator and oil cooler

Conveniently located on the top of the engine compartment, the radiator components are protected from damage from the rear yet within easy reach for cleaning and routine maintenance.



● Tilt-up cabin

The cabin can be tilted 64° without having to lift the arm, allowing easy access to the hydraulic pumps, valves, lines and hydraulic tank.



● Easy-clean Floor Mat and Drain Outlet

The soft rubber floor mat is easy to remove and clean. And with the built-in drain outlet, the mat can be washed in the cab.

Shown with ISO Pilot Controls

VERSATILITY

With a wide variety of attachments available*, Kubota skid steer loaders are the most versatile machines on the jobsite.

*Not all attachments are OEM-KUBOTA.



Auger	Power Rake	Rotary Tiller	Snow Blower	Tree Puller
Angle Broom	Rock Bucket	Stump Grinder	Snow Pusher	
Grapple	Rotary Cutter	Snow Blade	3-Point Hitch	

Hydraulic Coupler

An optional Hydraulic quick coupler is available. You can attach or remove attachments using a switch without leaving the seat.

EQUIPMENT

STANDARD EQUIPMENT

- Open CAB (ROPS/FOPS Level1)
- Top/Rear window
- Type of Control (Hand & Foot control/ISO pilot control)
- Suspension Seat
- 2" Retractable seat belt
- Fold down arm rests
- Dial throttle
- 12V electric outlet
- Radio Ready (Closed Cab only)
- Horn
- Backup alarm
- Work lights (Front 2/Rear 2)
- Side lights
- Bucket Cylinder Guards
- Protection for AUX coupler
- Mechanical quick coupler
- Heavy Duty Tire
- SSV65 10-16.5
- SSV75 12-16.5

OPTIONAL EQUIPMENT

- High flow hydraulics
- Multifunction lever
- 14 pin coupler for attachments
- Kubota Shockless Ride (KSR)
- Self leveling (on/off)
- Air ride suspension seat
- 3" Retractable seat belt
- Door lock key
- Various buckets and other attachments
- Tire options
- Hydraulic quick coupler
- Hazard Lamp/Turn Signals
- Strobe light
- Beacon light
- Polycarbonate door
- Additional counterweight
- Engine block heater
- ...and much more.

SPECIFICATIONS

Model		SSV65	SSV75		
Type of operator station		Open CAB / Closed CAB	Open CAB / Closed CAB		
Engine	Model	V2607-CR-TE4	V3307-CR-TE4		
	Emission certification	Tier 4			
	Gross HP (SAE J1995)	HP (kW)/rpm	64.0 (47.7)/2700	74.3 (55.4)/2600	
	Net HP (SAE J1349)	HP (kW)/rpm	61.3 (45.7)/2700	71.6 (53.4)/2600	
	Displacement	cu.in. (cc)	159.7 (2615)	203.3 (3331)	
	Cylinders		4	4	
	Bore Stroke	in.(mm)	3.5 (87) × 4.4 (110)	3.8 (94) × 4.8 (120)	
	Aspiration		Turbocharged	Turbocharged	
Loader performance	Rated operating capacity-50% tipping load	lbs. (kg)	1950 (885)	2690 (1220)	
	Tipping load	lbs. (kg)	3900 (1770)	5380 (2440)	
	Breakout force	Bucket	lb. (kgf)	4839 (2195)	5884 (2669)
		Lift arm	lb. (kgf)	3858 (1750)	4850 (2200)
	Lift arm path		Vertical	Vertical	
Power train	Standard tire size		10-16.5-8PR	12-16.5-10PR	
	Chain size ASA#		80	100	
	Travel speed	Low	mph (km/h)	6.9 (11.1)	7.4 (11.9)
		High	mph (km/h)	11.1 (17.8)	11.8 (19.0)
	Traction force	lb. (kgf)	7339 (3329)	8494 (3853)	
	Ground clearance	in. (mm)	7.6 (193)	8.1 (207)	
Hydraulic system	Loader hydraulic flow	gpm (ℓ/min.)	18.0 (68.0)	20.9 (79.0)	
	Loader hydraulic pressure	psi (kgf/cm²)	3271 (230)	3271 (230)	
	Aux. hydraulic flow	Standard	gpm (ℓ/min.)	18.0 (68.0)	20.9 (79.0)
		High	gpm (ℓ/min.)	28.0 (106.0)	30.4 (115.0)
Service refill capacities	Hydraulic tank	gal. (ℓ)	4.2 (16.0)	4.2 (16.0)	
	Fuel tank	gal. (ℓ)	25.4 (96.0)	26.9 (102.0)	
Operating weight (Include operator weight 165 lbs.)		lbs. (kg)	7099 (3220) / 7319 (3320)	8245 (3740) / 8466 (3840)	

DIMENSIONS

SSV65 / SSV75

